

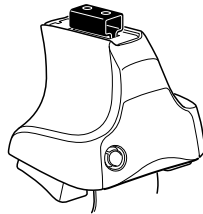
Kit 1551

INFINITI G25, 4-dr Sedan, *10–

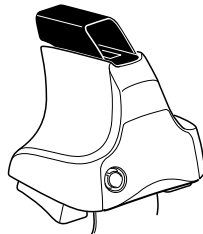
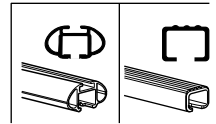
INFINITI G35, 4-dr Sedan, *07–

INFINITI G37, 4-dr Sedan, *09–

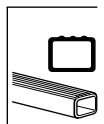
*North America



754 Rapid System
480R Rapid Traverse (North America)



480 Traverse (North America)



754 Rapid System
 480R Rapid Traverse (North America)

754 Rapid System
 480R Rapid Traverse (North America)
 480 Traverse (North America)

(North America)

670 x2
 775 x2
 284 x1
 285 x1
 286 x1
 287 x1
 x1

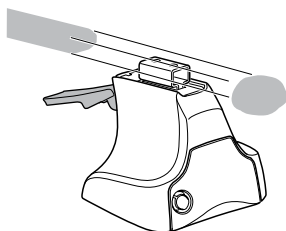
1



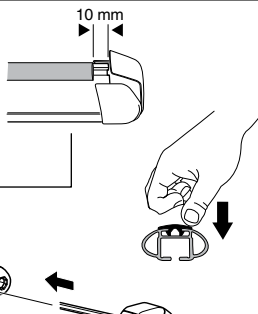
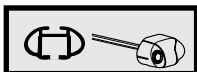
2



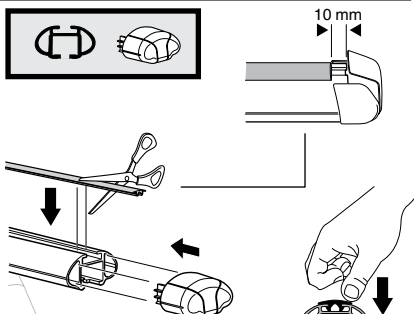
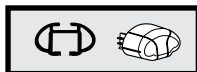
754 Rapid System
480R Rapid Traverse
(North America)



x4



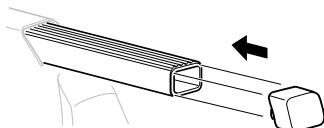
x4



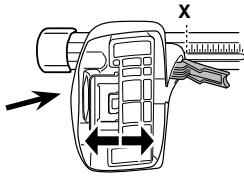
x4



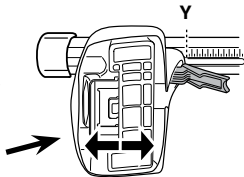
480 Traverse
(North America)



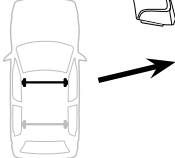
x4

3**754** Rapid System

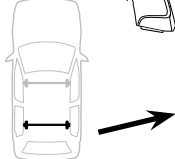
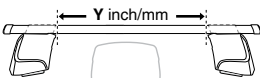
	X
INFINITI G25, 4-dr Sedan, 10–	37
INFINITI G35, 4-dr Sedan, 07–	37
INFINITI G37, 4-dr Sedan, 09–	37



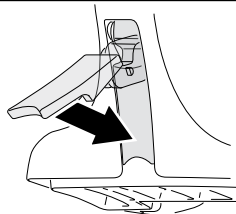
	Y
INFINITI G25, 4-dr Sedan, 10–	34,5
INFINITI G35, 4-dr Sedan, 07–	34,5
INFINITI G37, 4-dr Sedan, 09–	34,5

3**480R** Rapid Traverse**480** Traverse**(North America)**

	X inch	X mm
INFINITI G25, 4-dr Sedan, 10–	40 1/4"	1021 mm
INFINITI G35, 4-dr Sedan, 07–	40 1/4"	1021 mm
INFINITI G37, 4-dr Sedan, 09–	40 1/4"	1021 mm

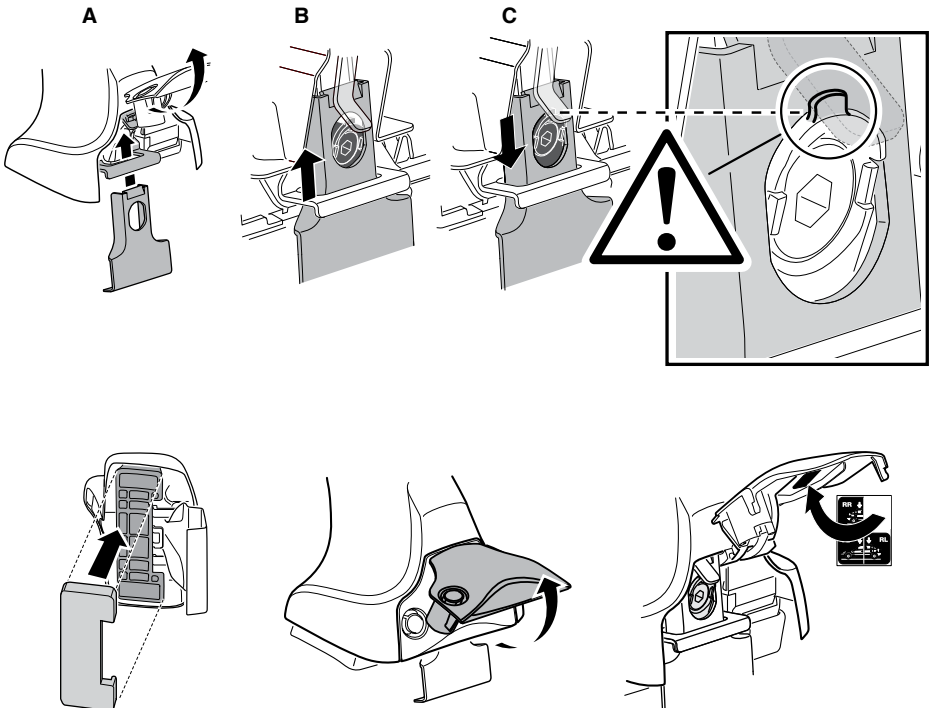
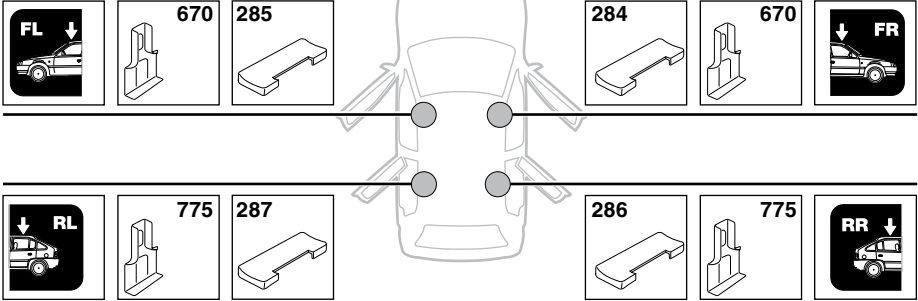


	Y inch	Y mm
INFINITI G25, 4-dr Sedan, 10–	39 1/4"	996 mm
INFINITI G35, 4-dr Sedan, 07–	39 1/4"	996 mm
INFINITI G37, 4-dr Sedan, 09–	39 1/4"	996 mm

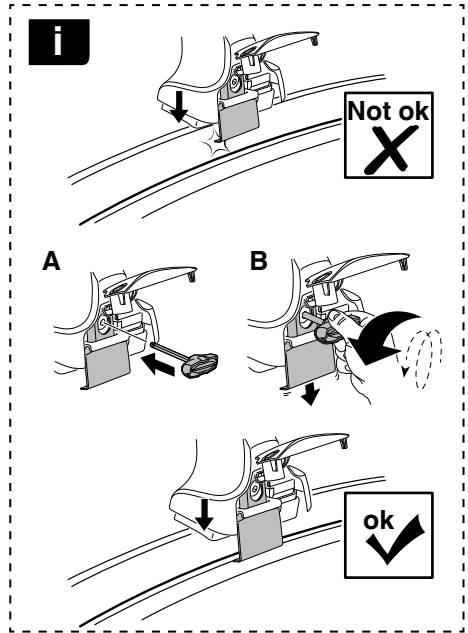
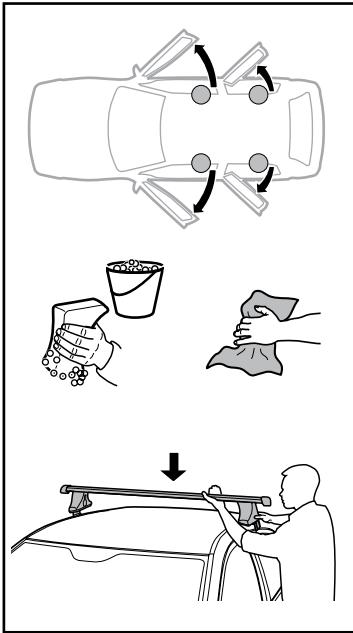
4

5

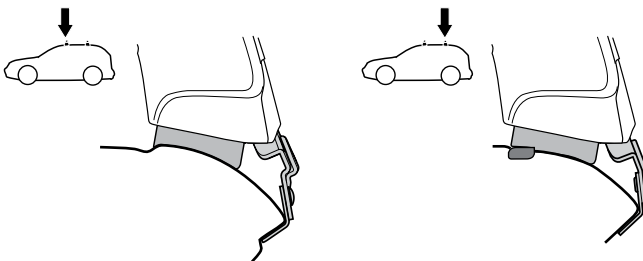
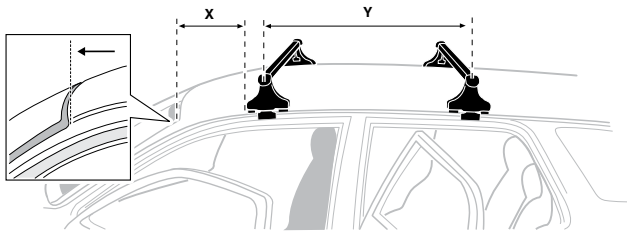
INFINITI G25, 4-dr Sedan, 10-
INFINITI G35, 4-dr Sedan, 07-
INFINITI G37, 4-dr Sedan, 09-



6



	X mm	Y mm	X inch	Y inch
INFINITI G25, 4-dr Sedan, 10-	270 mm	685 mm	10 1/2"	27"
INFINITI G35, 4-dr Sedan, 07-	270 mm	685 mm	10 1/2"	27"
INFINITI G37, 4-dr Sedan, 09-	270 mm	685 mm	10 1/2"	27"



7



GB/US Tighten alternately
D Die Schrauben abwechselnd anziehen
F Serrer alternativement chaque côté
NL Afwisselend aan de linker- en de rechterkant aandraaien
I Alternare il serraggio delle viti
E Apertar alternativamente
PT Aperte alternadamente
S Dra åt växelvis
FIN Kierrä vuorotellen
EST Pinguldage vaheldumisi
LAT Pieļieciet pamišus
LIT Užsukinėkite pakaitomis
PL Śruby dokręcaj naprzemiennie
RU Затягивайте попеременно

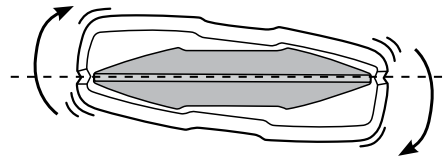
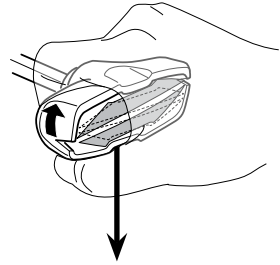
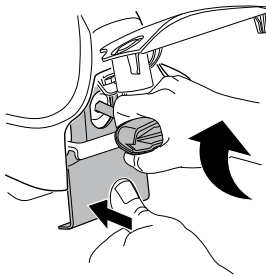
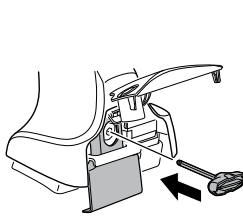
CZ Pokręťta bagażnika dokręcaj naprzemiennie.
SK Dofahajte striedavo
SLO Privijajte izmenično.
HR Naizmjenično zategnite
HU Egymástól függetlenül szorítandó
GR Σφιγίγεται εναλλάξ
TR Dönüşümlü sıkın

中文 交替拧紧

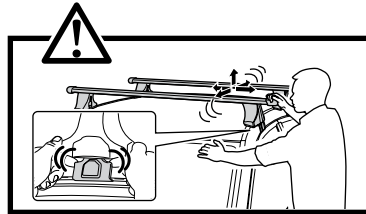
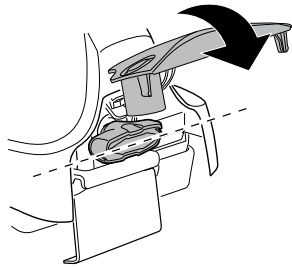
한국어 번갈아 가며 조이십시오.

日本語 交互に締め付けてください。

ไทย ชันในแบบสลับ



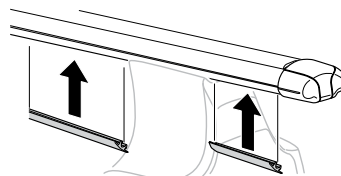
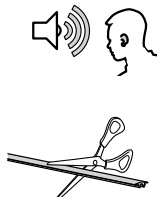
≈ 3 Nm

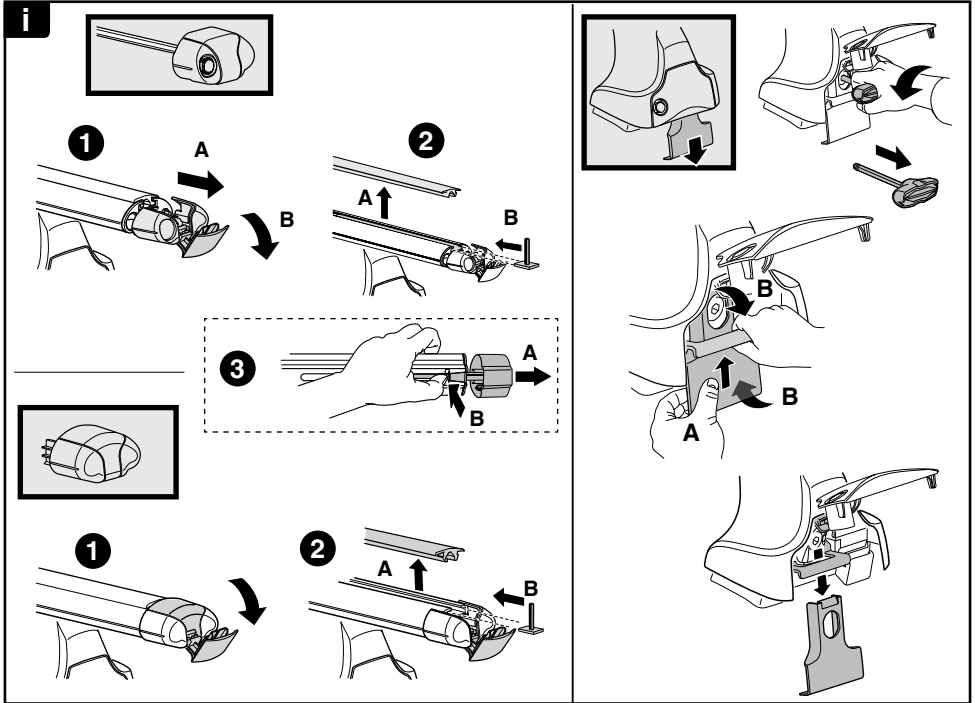


8

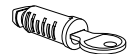
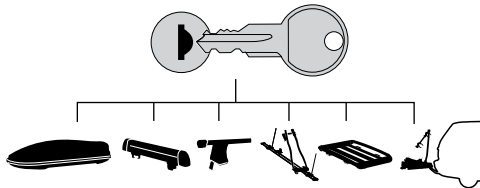


x1
17 mm





THULE
SWEDEN
**ONE
KEY
SYSTEM**



544 (x4)

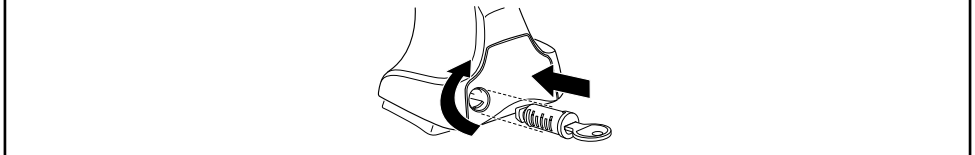
596 (x6)

588 (x8)

NA **510** (x10)

EUR **452** (x12)

ASIA



WW ▶ Thule Sweden AB, Box 69, 330 33 Hillerstorp, SWEDEN
NA ▶ Thule Inc., 42 Silvermine Road, Seymour, Connecticut 06483, USA

info@thule.com
customer.service@thule.com

www.thule.com

503-1551-02